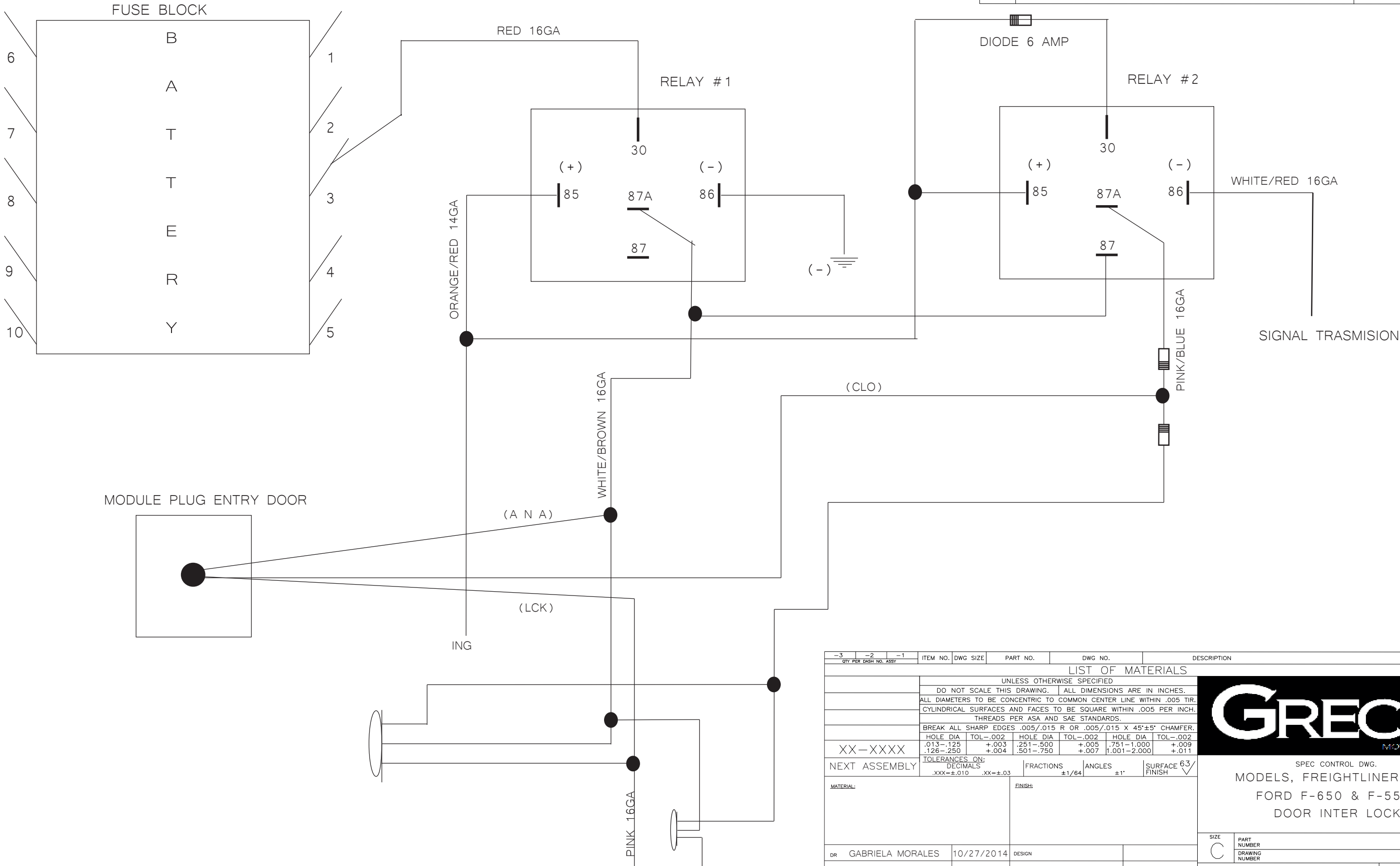


THE INFORMATION DISCLOSED ON THIS DRAWING IS PROPRIETARY. IT IS ISSUED FOR ENGINEERING USE ONLY AND MAY NOT BE REPRODUCED OR DISCLOSED, IN WHOLE OR IN PART, TO ANYONE WITHOUT THE DIRECT WRITTEN PERMISSION OF GRECH MOTORS LLC
PARTS OR TOOLS MANUFACTURED TO MEET THE REQUIREMENTS OF THIS DRAWING MAY NOT BE USED BY OR SOLD TO ANYONE WITHOUT THE DIRECT WRITTEN PERMISSION OF GRECH MOTORS LLC.

REVISIONS			
REV	DESCRIPTION	DATE	APPD



-3	-2	-1	ITEM NO.	DWG SIZE	PART NO.	DWG NO.	DESCRIPTION	NOTES			
QTY PER DASH NO. ASSY											
LIST OF MATERIALS											
UNLESS OTHERWISE SPECIFIED											
DO NOT SCALE THIS DRAWING. ALL DIMENSIONS ARE IN INCHES.											
ALL DIAMETERS TO BE CONCENTRIC TO COMMON CENTER LINE WITHIN .005 TIR.											
CYLINDRICAL SURFACES AND FACES TO BE SQUARE WITHIN .005 PER INCH.											
THREADS PER ASA AND SAE STANDARDS.											
BREAK ALL SHARP EDGES .005/.015 R OR .005/.015 X 45°±5° CHAMFER.											
HOLE DIA		TOL--.002		HOLE DIA		TOL--.002		HOLE DIA		TOL--.002	
.013--.125		+.003		.251--.500		+.005		.751--1.000		+.009	
.126--.250		+.004		.501--.750		+.007		1.001--2.000		+.011	
XX-XXXX											
NEXT ASSEMBLY		TOLERANCES ON: DECIMALS .XXX=±.010 .XX=±.03		FRACTIONS ±1/64		ANGLES ±1°		SURFACE FINISH		63/	
MATERIAL:		FINISH:									
DR GABRIELA MORALES		10/27/2014		DESIGN							
CHK				APPD							
		</									